

CERTIFIED LAND CORNER RECORDATION

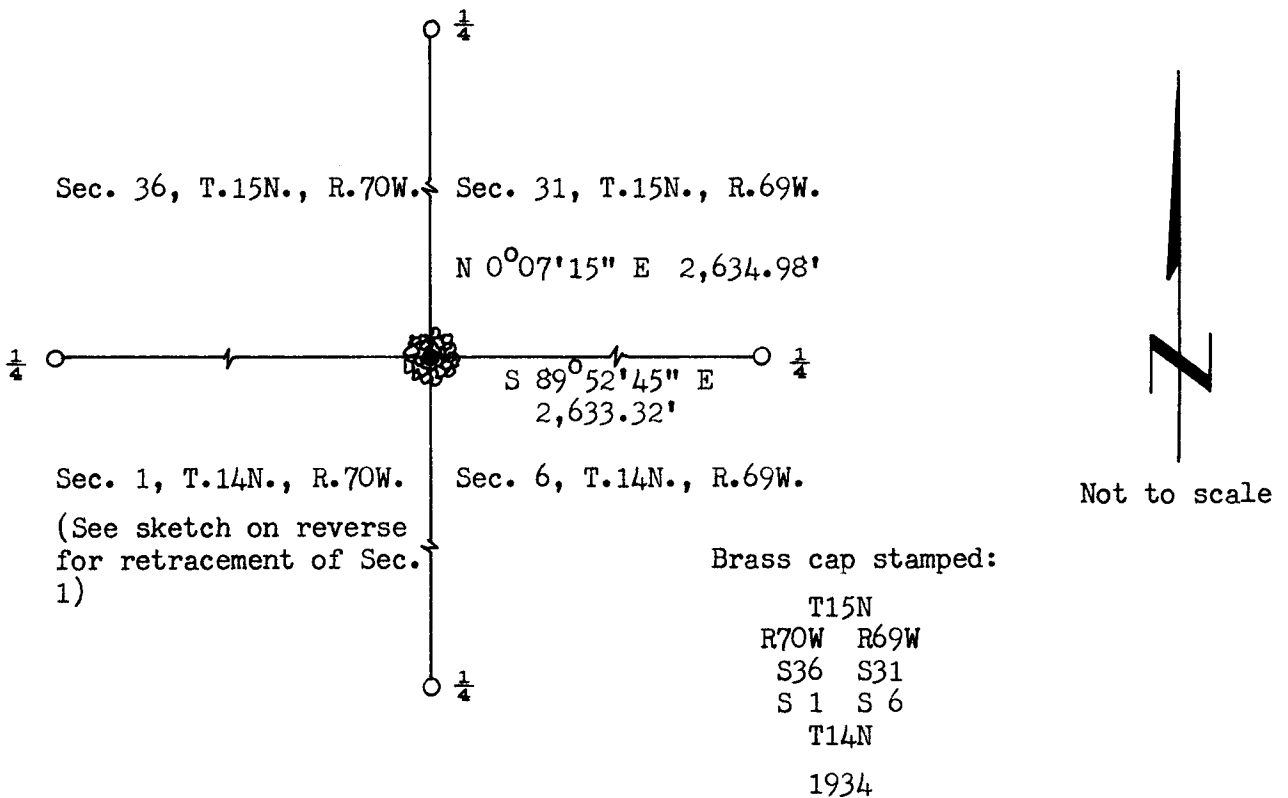
DESCRIPTION OF CORNER EVIDENCE FOUND, AND ORIGINAL RECORD (If known)

LOCATION Found G.L.O. record monument in good condition.
 T.15N. G.L.O. record - Iron post, 3ft. long, 3 ins. dia., 18 ins. in the ground
 T.14N. to bedrock, . . . , mound of stone to top, . . . , with
 R.70W., R.69W. brass cap.
 6th P.M.
 (Tp. cor.)

DESCRIPTION OF MONUMENT AND ACCESSORIES ESTABLISHED TO PERPETUATE THE ORIGINAL LOCATION OF THIS CORNER:

At the corner: None
 Accessories: Rebuilt rock mound around monument.

SKETCH, WITH COURSE AND DISTANCE TO ADJACENT CORNER IF DETERMINED IN THIS SURVEY.
 (May Sketch or Paste Reproduction on Reverse Side.)



Brass cap stamped:

T15N
 R70W R69W
 S36 S31
 S 1 S 6
 T14N
 1934

I, R.L. Hudson certify that I have carefully performed ~~or reviewed~~ the work done on the diagrammed corner as reported on this recordation form and approve the same.

R.L. Hudson Wyoming L.S. No. 519
 Signature of Surveyor Registration No.

STATE OF WYOMING,
 Office of Clerk and Recorder,
 County of Laramie

This "corner record" was filed for record on the 30th day of October, 1972, was noted on the cross-index plat and is assigned page No. 15-70, in book No. ONE

Jerry B. Williams
 County Official

Cross Index No.	<u>15N</u>	T.	<u>69W</u>	R.	<u>6th</u>	Mer.
	<u>14N</u>	T.	<u>70W</u>	R.	<u>6th</u>	Mer.
	<u>14N</u>	T.	<u>69W</u>	R.	<u>6th</u>	Mer.
	_____	T.	_____	R.	_____	Mer.
	_____	T.	_____	R.	_____	Mer.
	_____	T.	_____	R.	_____	Mer.
	_____	T.	_____	R.	_____	Mer.

A-1 14-69

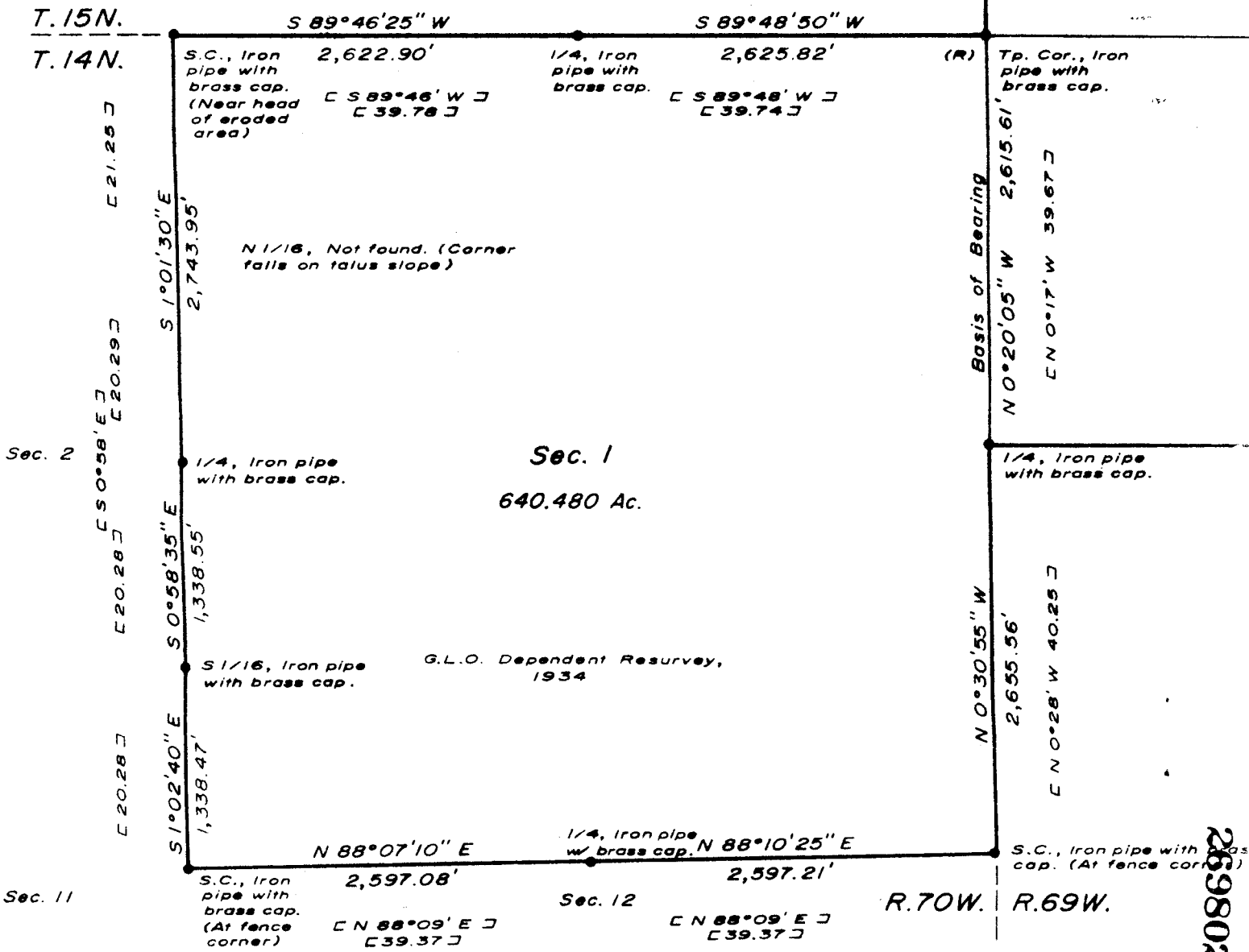
NOTES

1. ● denotes G.L.O. record monument found in good condition.
2. ○ denotes 1 1/2" dia. x 30" long concrete-filled iron pipe with brass cap (except where otherwise shown) set.
3. ⊙ denotes G.L.O. record monument found and replaced by 1 1/2" dia. x 30" long concrete-filled iron pipe with brass cap (except where otherwise shown or noted).
4. Corners excepted in Note 2 are monumented by 5/8" dia. x 24" long rebar with SurvKAP.
5. Basis of Bearing - As shown, by solar observation at the township corner, P.E. = ±05".
6. All bearings are referenced to the meridian of the township corner, latitude = 41°13'10"N. (scaled).
7. Convergence of meridians = 46" per statute mile.
8. Distances along section lines based on measurements by electronic means made by Wyoming P.E.&L.S. No. 529. (Hewlett-Packard 3800A)
10. (P) indicates corner declared lost and re-established by single proportionate measurement per Sec. 209 of The Manual of Surveying Instructions, 1947.
11. (R) indicates Corner Recordation Form filed per Sec. 219 of the (Wyoming) Session Laws of 1967.
12. [] denote G.L.O. record calls. (distances in chains)

Sec. 25 R.70W. R.69W.

G.L.O. Dependent Resurvey, 1934

Sec. 35 Sec. 36



269802